

HOW IT WORKS

(plus some definitions of key terms)

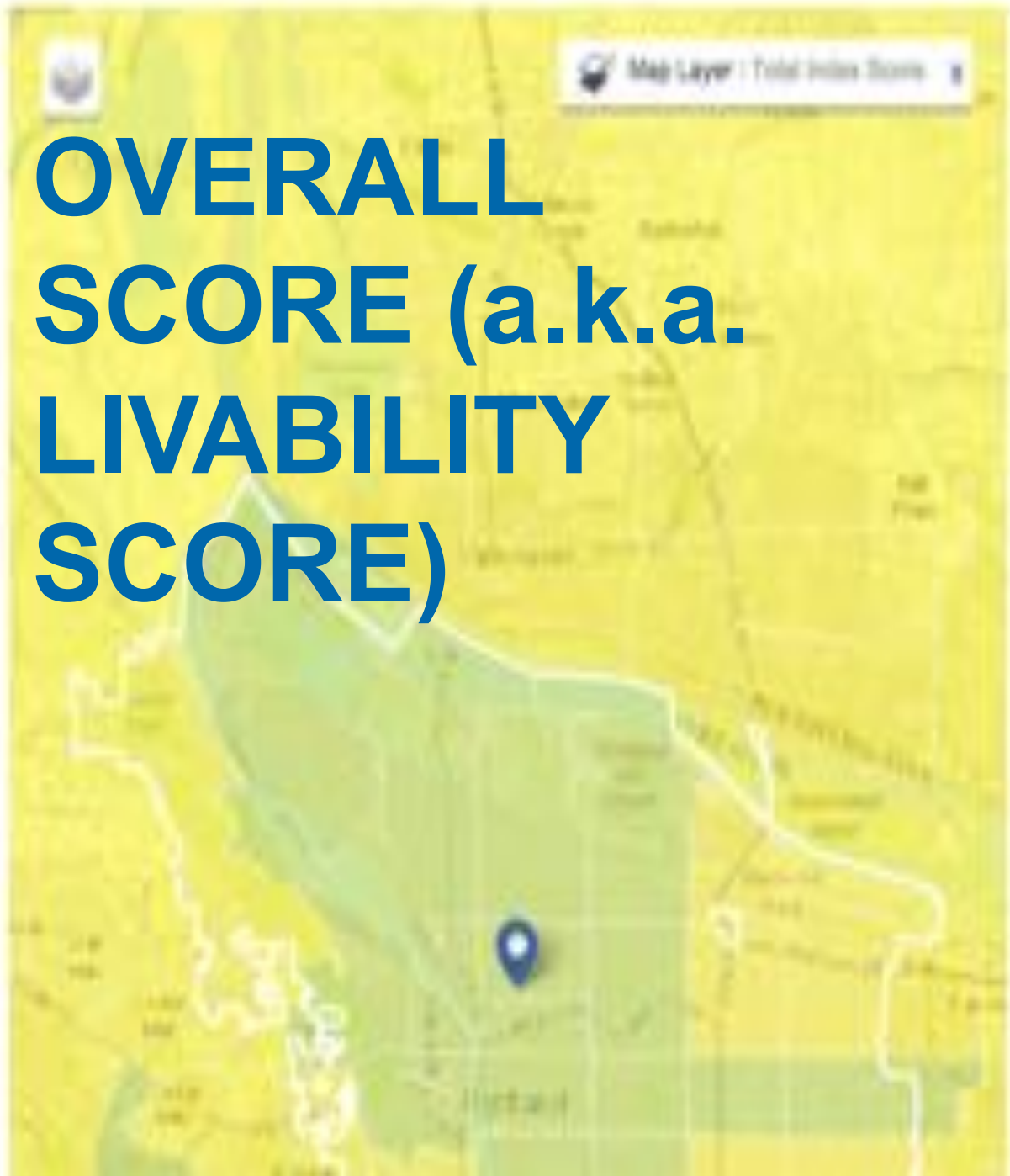


CUSTOMIZE THIS SCORE

CATEGORY SCORE

- 60 HOUSING
Affordability and access
- 65 NEIGHBORHOOD
Access to the work, school play
- 78 TRANSPORTATION
Safe and convenient options
- 27 ENVIRONMENT
Clean air and water

**OVERALL
SCORE (a.k.a.
LIVABILITY
SCORE)**



WHAT'S A GOOD SCORE?

The highest-scoring
neighborhood in the U.S.
has an overall score of...

WHAT'S A GOOD SCORE?

The highest-scoring
neighborhood in the U.S.
has an overall score of **78**.

Livability Score

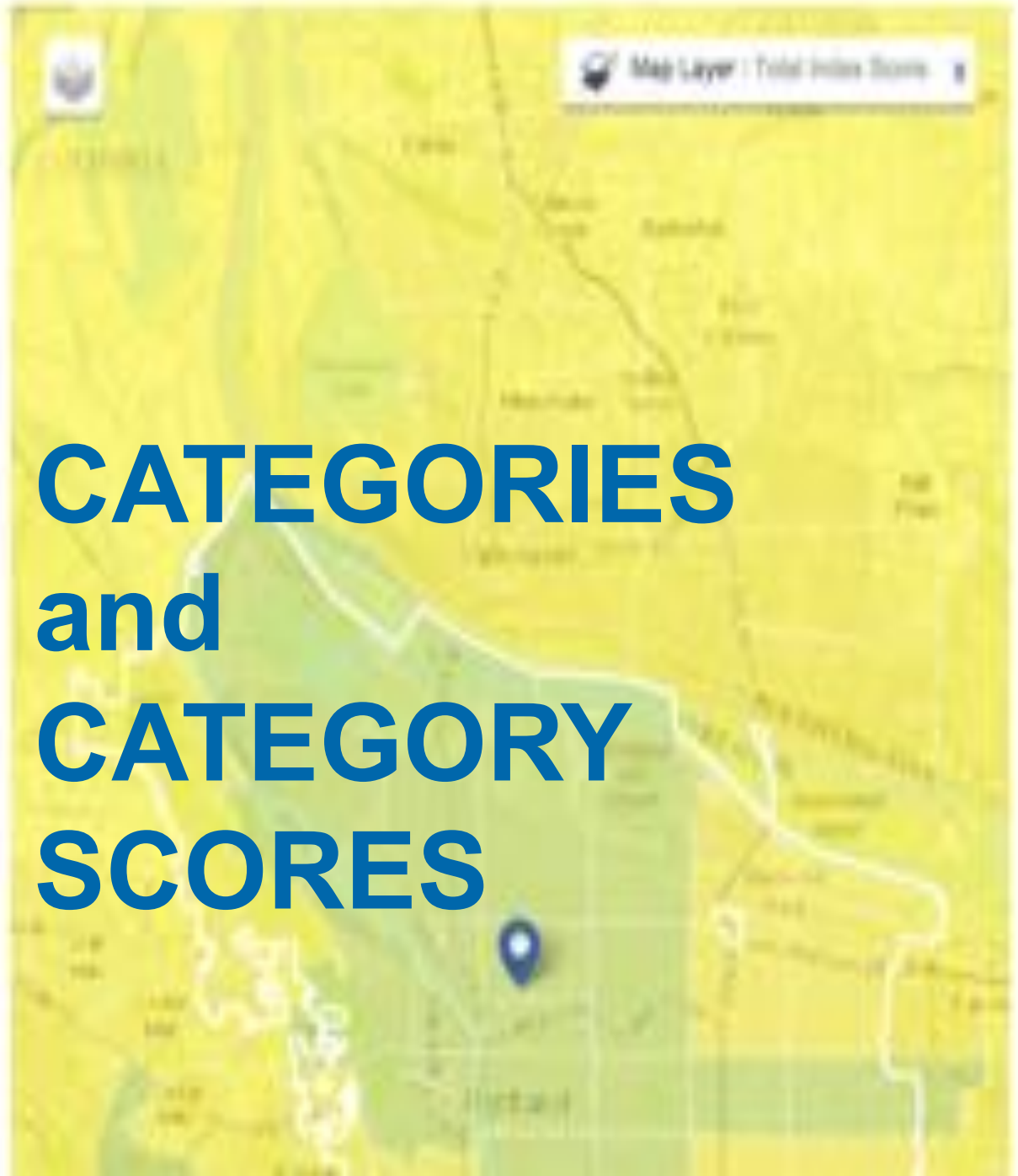


CUSTOMIZE THIS SCORE

CATEGORY SCORE

- 60 HOUSING
Affordability and access
- 65 NEIGHBORHOOD
Access to the work, school play
- 78 TRANSPORTATION
Safe and convenient options
- 27 ENVIRONMENT
Clean air and water

CATEGORIES and CATEGORY SCORES



WHAT'S A GOOD SCORE?

In each category, the highest-scoring neighborhood gets a 100.

What's downtown Portland's transportation score?

A grayscale photograph of a city street scene. In the foreground, a white tram is moving from left to right. To its left, a bus is also moving in the same direction. Several pedestrians are crossing the street. In the background, there are trees, buildings, and traffic lights. A large blue number '100!' is overlaid in the center of the image.

100!



CUSTOMIZE THIS SCORE

CATEGORY SCORE

- 60** HOUSING
Affordability and access
- 65** NEIGHBORHOOD
Access to the work, and play
- 78** TRANSPORTATION
Safe and convenient options
- 27** ENVIRONMENT
Clean air and water
- 72** HEALTH
Prevention, access, and quality
- 78** ENGAGEMENT
Civil and social involvement
- 44** OPPORTUNITY
Inclusion and possibilities

METRICS



HOUSING

Affordability and access

They say home is where the heart is—and the same holds true for the Livability Index. Housing is a central component of livability. Deciding where to live influences many of the topics the Index covers. We spend more time in our homes than anywhere else, so housing costs, choices, and accessibility are critical. Great communities provide housing opportunities for people of all ages, incomes, and abilities, allowing everyone to live in a quality neighborhood regardless of their circumstances.

Metric Policies Resources

How does my community compare to neighborhoods across the country?

● TOP THIRD ● MIDDLE THIRD ● BOTTOM THIRD

<input checked="" type="checkbox"/> Housing accessibility BASIC PASSAGE	3.1% of units have basic passage Median US neighborhood: 2.8%
<input checked="" type="checkbox"/> Housing options AVAILABILITY OF MULTI-FAMILY HOUSING	38.8% of units are multi-family Median US neighborhood: 18.8%
<input checked="" type="checkbox"/> Housing affordability HOUSING COSTS	\$1,281 per month Median US neighborhood: \$289
<input checked="" type="checkbox"/> Housing affordability HOUSING COST BURDEN	21.4% of income spent on housing Median US neighborhood: 18.4%
<input checked="" type="checkbox"/> Housing affordability	248 units per 10,000



CUSTOMIZE THIS SCORE

CATEGORY SCORE

- 60 HOUSING
Affordability and access
- 65 NEIGHBORHOOD
Access to the work, and play
- 78 TRANSPORTATION
Safe and convenient
- 27 ENVIRONMENT
Clean and green
- 72 HEALTH
Prevention, safety
- 78 ENGAGEMENT
Civic and social involvement
- 44 OPPORTUNITY
Inclusion and possibility

HOUSING

Affordability and access

They say home is where the heart is—and the same holds true for the Livability Index. Housing is a central component of livability. Deciding where to live influences many of the topics the Index covers. We spend more time in our homes than anywhere else, so housing costs, choices, and accessibility are critical. Great communities provide housing opportunities for people of all ages, incomes, and abilities, allowing everyone to live in a quality neighborhood regardless of their circumstances.

Metric Policies Resources

How does my community compare to neighborhoods across the country?

● TOP THIRD ● MIDDLE THIRD ● BOTTOM THIRD

Housing accessibility
BASIC PASSAGE 3.1% of units have basic passage
Median US neighborhood: 2.8%

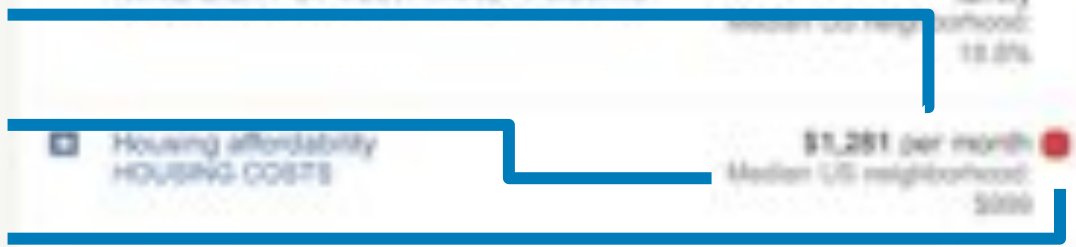
Housing options
AVAILABILITY OF MULTI-FAMILY HOUSING 38.8% of units are multi-family
Median US neighborhood: 18.0%

Housing affordability
HOUSING COSTS \$1,281 per month
Median US neighborhood: \$289

Housing affordability
HOUSING COST BURDEN 21.4% of income spent on housing
Median US neighborhood: 18.4%

Housing affordability
248 units per 10,000

Value
U.S. median
Traffic lights





CUSTOMIZE THIS SCORE

CATEGORY SCORE

- 60** HOUSING
Affordability and access
- 65** NEIGHBORHOOD
Access to life, work, and play
- 78** TRANSPORTATION
Safe and convenient options
- 27** ENVIRONMENT
Clean air and water
- 72** HEALTH
Prevention, access, and quality
- 78** ENGAGEMENT
Civic and social involvement
- 44** OPPORTUNITY
Inclusion and possibilities



HOUSING

Affordability and access

They say home is where the heart is—and the same holds true for the Livability Index. Housing is a central component of livability. Deciding where to live influences many of the topics the Index covers. We spend more time in our homes than anywhere else, so housing costs, choices, and accessibility are critical. Great communities provide housing opportunities for people of all ages, incomes, and abilities, allowing everyone to live in a quality neighborhood regardless of their circumstances.

Metrics

Policies

Resources

<input checked="" type="checkbox"/>	Housing accessibility STATE AND LOCAL INCLUSIVE DESIGN LAWS	No Policy <input type="radio"/>
<input checked="" type="checkbox"/>	Housing affordability STATE AND LOCAL HOUSING TRUST FUNDS	Policy in Place <input checked="" type="radio"/>
<input checked="" type="checkbox"/>	Housing options STATE MANUFACTURED HOUSING PROTECTIONS	No Policy <input type="radio"/>
<input checked="" type="checkbox"/>	Housing affordability STATE FORECLOSURE PREVENTION AND PROTECTION	Policy in Place <input checked="" type="radio"/>
<input checked="" type="checkbox"/>	Commitment to livability STATE AND LOCAL PLANS TO CREATE AGE-FRIENDLY COMMUNITIES	Policy in Place <input checked="" type="radio"/>

POLICIES



CUSTOMIZE THIS SCORE

CATEGORY SCORE

- 60** HOUSING
Access to affordable housing
- 65** NEIGHBORHOOD
Access to the work, and play
- 78** TRANSPORTATION
Safe and convenient options
- 27** ENVIRONMENT
Clean air and water
- 72** HEALTH
Prevention, access, and quality
- 78** ENGAGEMENT
Civic and social involvement
- 44** OPPORTUNITY
Inclusion and possibilities

MAP LAYERS

Map Layer: Total Index Score

POPULATION CHARACTERISTICS		ENVIRONMENT	
Total Score	CLEAR	Environment Score	APPLY
Total Population *	APPLY	Regional Air Pollution	APPLY
% African American *	APPLY	Water Pollution	APPLY
% Asian *	APPLY	HEALTH	
% Hispanic *	APPLY	Health Score	APPLY
% Age 50+ *	APPLY	Smoking Rates	APPLY
% Age 65+ *	APPLY	Obesity Rates	APPLY
HOUSING		Access to Exercise Opportunities	APPLY
Housing Score	APPLY	Health Professional Shortage Areas	APPLY
Housing Options	APPLY	Life Expectancy (Years) *	APPLY
Housing Costs	APPLY	ENGAGEMENT	
Housing Cost Burden	APPLY	Engagement Score	APPLY
NEIGHBORHOOD		Voting Rates	APPLY
Neighborhood Score	APPLY	Volunteer Rates	APPLY
Access to Healthy Foods	APPLY	Broadband Cost and Speed	APPLY
Access to Parks			



CUSTOMIZE THIS
SCORE

CATEGORY SCORE

60 HOUSING
Affordability and access [>](#)

65 NEIGHBORHOOD
Access to the work, and play [>](#)

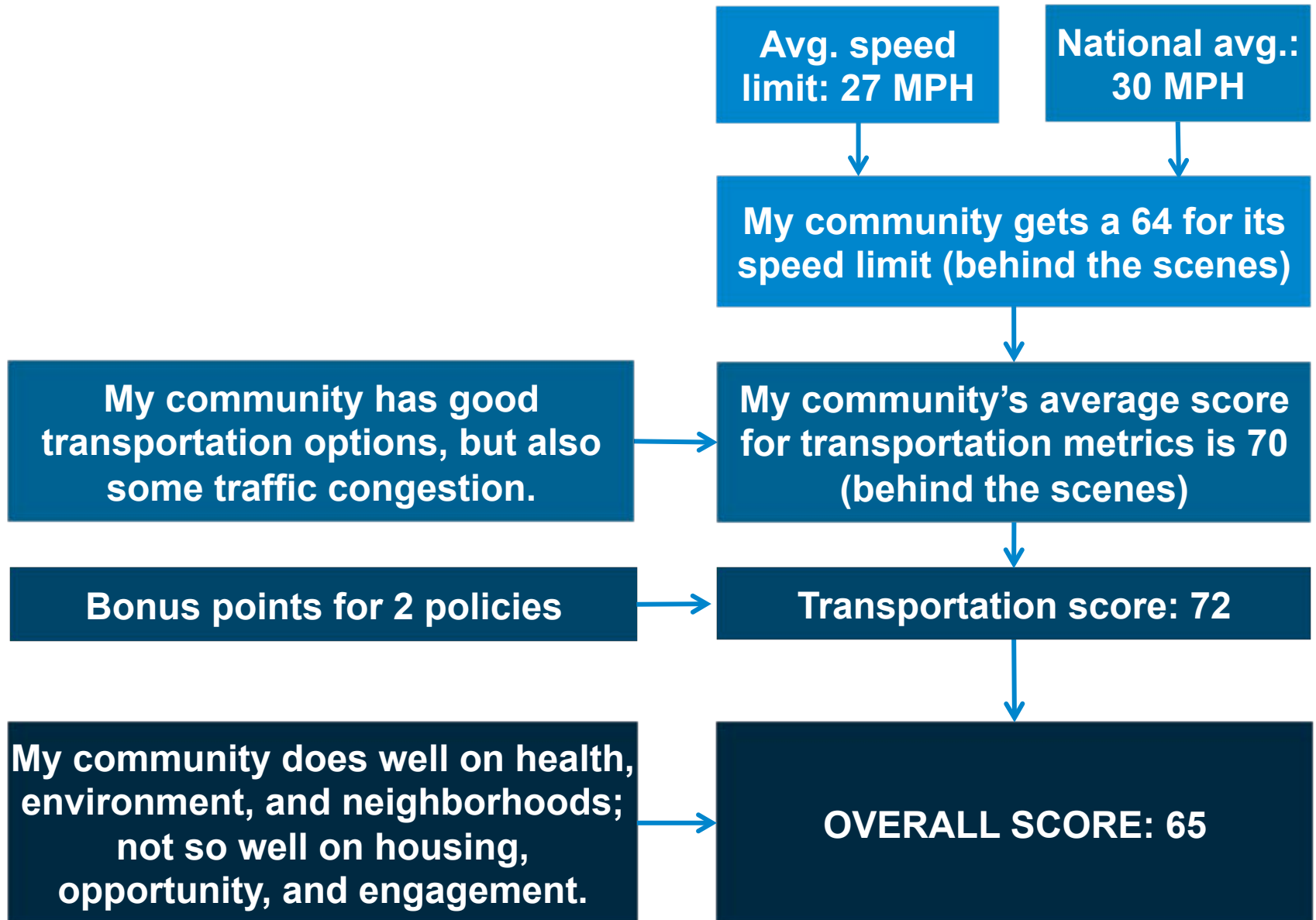
78 TRANSPORTATION
Safe and convenient options [>](#)

27 ENVIRONMENT
Clean air and water [>](#)

0 URBANITY
[>](#)



HOW IT ALL COMES TOGETHER



TOUGH DECISIONS

(and what they mean for other efforts to use data to measure and communicate issues related to livability)



SCIENCE



money.cnn.com

PREFERENCE

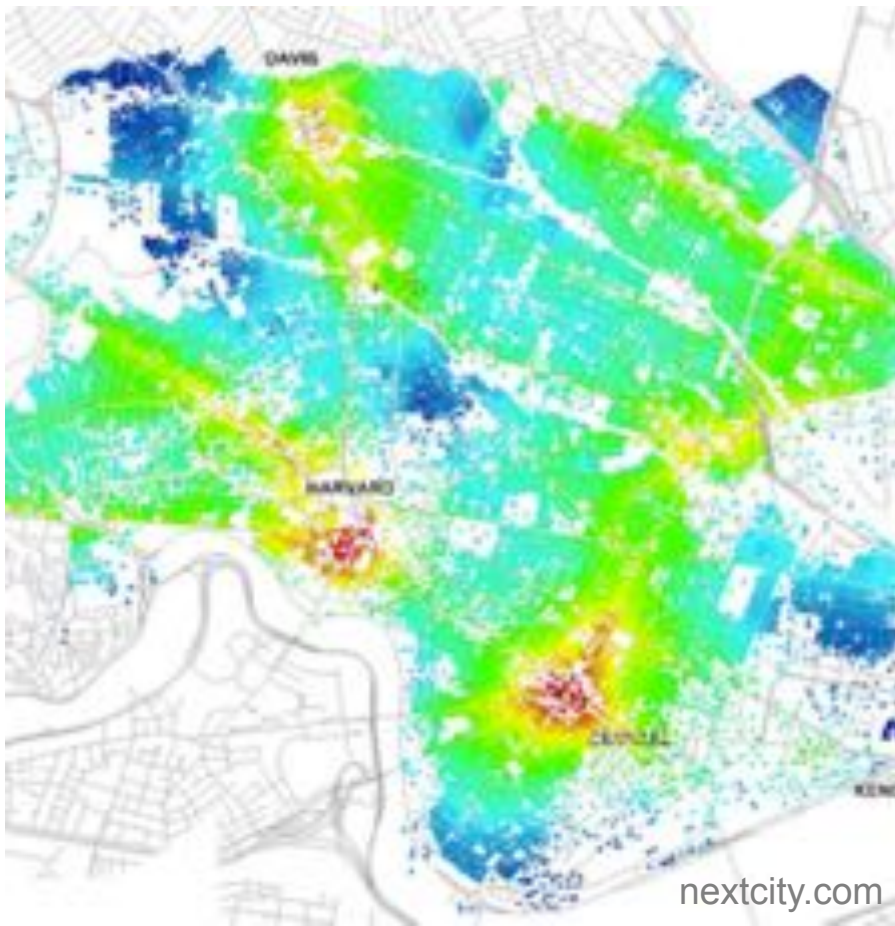


- Research review
- Expert advisors
- Quantitative data



money.cnn.com

- Livability survey
- Customizable



THE BEST DATA



DATA FOR ALL

Walk Score
99
Walker's Paradise
Daily errands do not require a car.

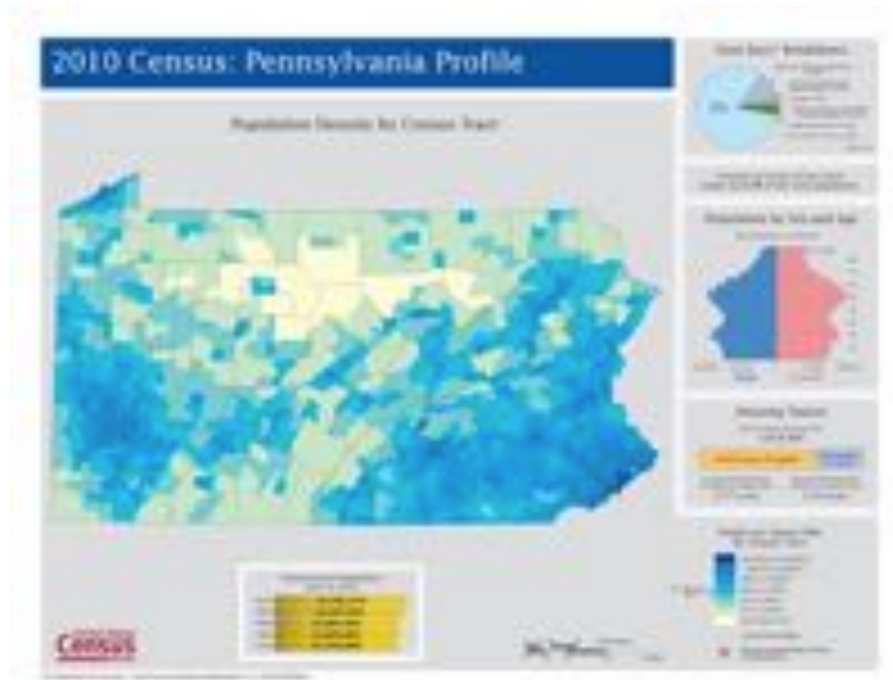
Transit Score
94
Rider's Paradise
World-class public transportation.

Bike Score
99
Biker's Paradise
Flat as a pancake, excellent bike lanes.

About your score



Add this map to your site for free

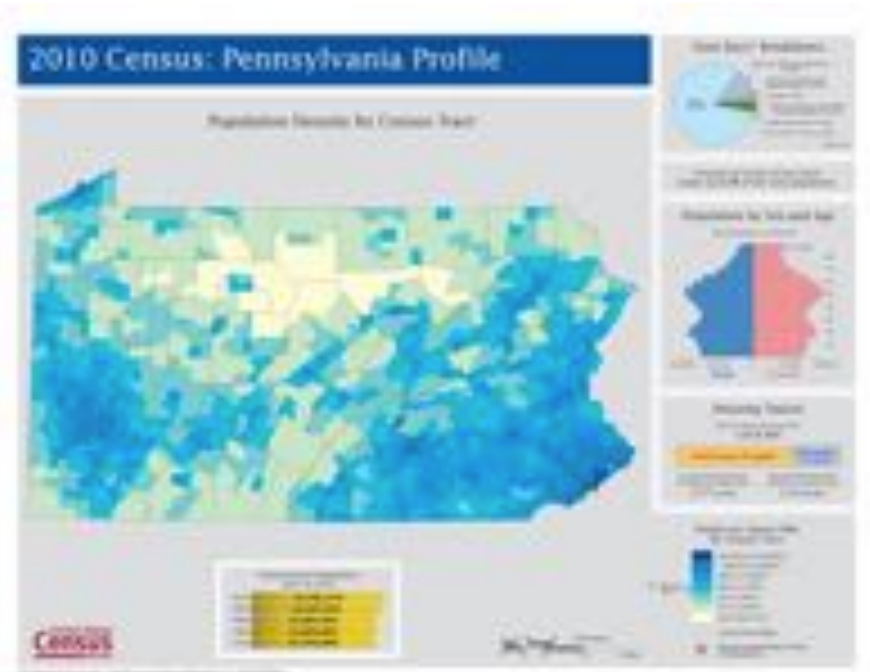


COMPELLING

RICH



walkscore.com



census.gov

- One livability score
- Simple policies
- User-friendly website

- 7 category scores, 40 metrics
- Map overlays
- Compare tool

HIGHEST-SCORING COMMUNITIES

(and how our decisions
shaped the results)



Mifflin West, Madison, WI



Upper West Side, Manhattan, NY



Downtown Crossing, Boston, MA



SOMA, San Francisco, CA



Washburn, La Crosse, WI



Downtown, Sioux Falls, SD



Southside, Virginia, MN



Downtown, Bismarck, ND



Downtown, Seattle, WA



Downtown, Los Alamos, NM

- Lack of an “upper limit” on many metrics favors downtowns
- The Upper Midwest does well on Health and Engagement
- University towns offer a mix of small town and big city benefits
- A lot of people feel like affordability and weather don’t influence scores enough